

A NEW SPECIES OF *EUPRAGIA* FROM FLORIDA  
(OECOPHORIDAE)

RONALD W. HODGES

Entomology Research Division, Agricultural Research Service, U.S.D.A.,  
Washington, D. C.

In material I collected in south-central Florida in 1964 I have found a new species of oecophorid that represents a genus hitherto unrecorded from the continental United States. At that time two worn males were taken in an almost pure stand of *Taxodium distichum* (L.) Richard. Subsequently, I have received three additional specimens of the species from Mrs. Shirley Hills of Pensacola, Florida. Unfortunately, no females have been taken, so the species cannot be diagnosed for this sex.

The genus *Eupragia* Walsingham will key to couplet 15[a] in Clarke's (1941, Proc. U. S. Natl. Mus., 90: 40) "Artificial key to genera." It may be separated from *Fabiola* Busck (15[a]) by having veins 3 and 4 of the hindwing coincident or stalked (connate in *Fabiola*). In Clarke's "Key to genera based on male genitalia," *Eupragia* will run to couplet 7[a], *Depressaria* Haworth. From this genus it may be separated by having well-developed anellifers; these are lacking in *Depressaria*.



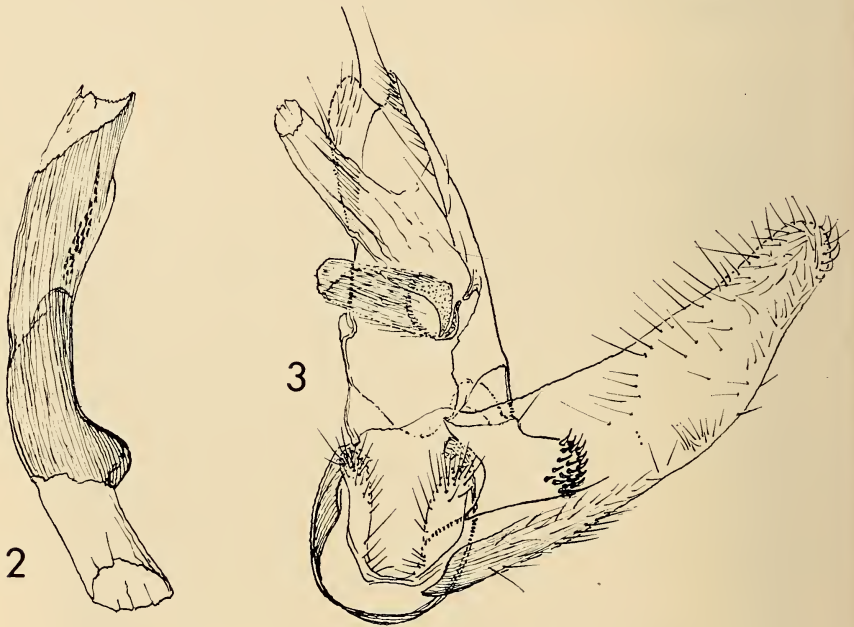
Figure 1. Habitus of *Eupragia hospita* Hodges.

*Eupragia* (type-species *E. solida* Walsingham, 1911) has three known species: *solida*, which has been taken at Teapa, Tabasco, Mexico and in Nicaragua; *oxinopa* Meyrick, which is known from Gorgona Island, Colombia; and the new species, *hospita*, in Florida.

The drawing of the male genitalia was executed by Mr. A. Cushman of the Entomology Research Division. The habitus photograph was taken by Mr. J. Scott, Staff Photographer, Smithsonian Institution.

### *Eupragia hospita* Hodges, new species

MALE.—Maculation: as in figure 1. *Head*: tongue, maxillary palpus, frons, and vertex white; labial palpus white, dorsal and lateral surfaces of first and second segments grayish brown, dorsal surface of third segment pale grayish brown; lateral and ventral margins of frons grayish brown; occiput white mixed with grayish brown; scape of antenna white, bordered with gray-brown on posterodorsal margin, shaft pale yellow becoming slightly darker distally. *Thorax*: tegula white with light brown scales anterolaterally, disc light brown, apex orange-white to white, some scales lined with off-white, collar pale orange. *Forewing*: white streaked with light brown and brown, spot in cell and one at end of cell dark brown, cilia gray-brown on costa and apex, whitish elsewhere. *Hindwing*: brownish gray, basal row of scales of cilia slightly paler brownish gray, distal row gray-white to white, tuft of scales from base of anal vein gray-white. *Prothoracic leg*: coxa white, overlaid with light brown medially; femur light brown, inner margin off-white to white, a row of setae along



Figures 2-3. Male genitalia of *Eupragia hospita* Hodges; 2, aedeagus; 3, ventral aspect of genitalia (right valva and aedeagus missing).

inner margin; tibia light brown, inner margin of epiphysis off-white; tarsal segments light orange, apices orange-white. *Mesothoracic leg*: much as for prothoracic leg, pale margin of femur broader, femur lacking row of setae; tibia white, apex light orange; tarsus orange-white to pale orange, apices and dorsal surface of first segment white. *Metathoracic leg*: coxa white; femur light brown with a small patch of white scales at apex; tibia white on ventral margin and spines, a broad, medial light orange band, dorsal tuft white with scattered light orange scales; ventral half of tarsal segments pale orange, dorsal half white. *Abdomen*: dorsal surface mottled white and light brown; ventral surface white medially and laterally, a brown band dividing the white areas. Alar expanse: 20–21 mm. *Male genitalia*: as in figures 2 and 3 (RWH slide 3497). Width of anellar lobes one-third length, apex with stout setae; apex of anellifer broadly rounded with stout setae, one or two stout (about one-half width of those at apex) setae costad of midpoint; apex of tegumen deeply excavated; aedeagus cylindrical, produced ventrally at base, vesica with numerous, fine cornuti.

FEMALE.—Unknown.

*Holotype male*: Florida, Pensacola, May 13, 1962, Shirley Hills, USNM type 69535. *Paratypes*: 2 ♂♂, same data as for type, May 4 and June 21, 1961, collection of Shirley Hills and USNM. 2 ♂♂, Fisheating Creek, Palmdale, Florida, 7–10 May 1964, R. W. Hodges (RWH slide 3497), USNM.

Food plant: unknown.

Discussion: Specimens of *Eupragia hospita* vary greatly in appearance depending upon wear. Fresh specimens have distinct maculation heavily shaded with brown and gray-brown; worn specimens lose much of the brown scaling. The head and thorax of some specimens have become greased, indicating that the larvae possibly are internal feeders.

*E. hospita* may be separated from *solida* by having the frons and vertex white, those of *solida* are brown medially. It differs from both *solida* and *oxinopa* by having vein 2 of the forewing arising at nearly a right angle, then curving to run parallel with the dorsal margin, and by having veins 2 and 3 of the forewing connate, not separate.

---

#### A LARVA OF *CITHERONIA SEPULCHRALIS* (CITHERONIIDAE) FROM NEW JERSEY

On August 6, 1967 I collected a mature larva of *Citheronia sepulchralis* Grote and Robinson, on pitch pine (*Pinus rigida*), near Hammonton, Atlantic County, New Jersey. I attempted to rear the larva but it failed to molt properly, and died.

Many authors mention the rarity of *C. sepulchralis*. In New Jersey the only previous records are those of Muller (1965, J. New York Ent. Soc., 73: 63–77) from Lakehurst, Ocean County, in June. Mr. Muller (personal communication) is not aware of any occurrence elsewhere in the State. Hammonton is 35 airline miles from Lakehurst, and it therefore seems possible that *C. sepulchralis* may be widespread, though rare, in the pine barrens area of New Jersey.

DAVID J. HORN, Dept. of Entomology, Cornell University, Ithaca, N.Y.